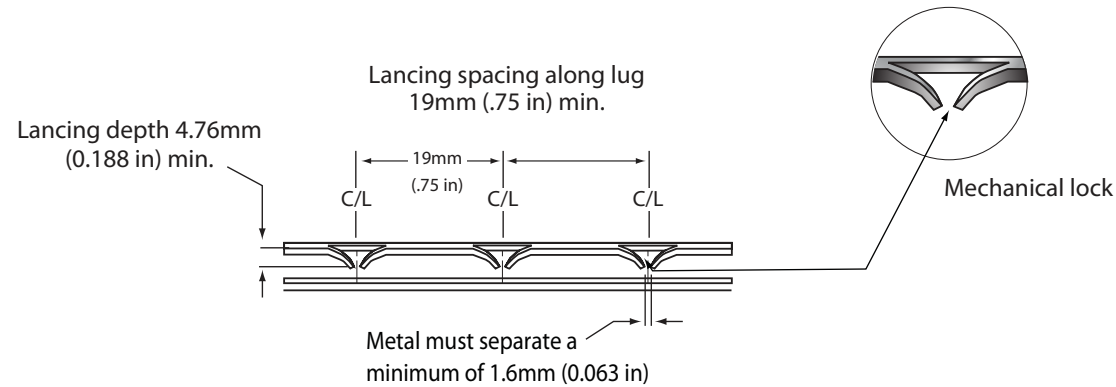
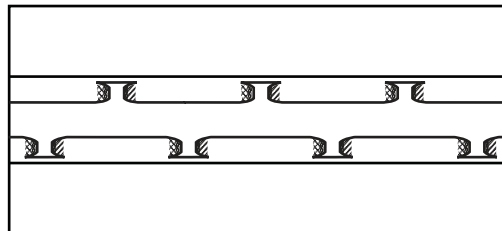


LNSPEC

LANCING SPECIFICATIONS



Staggered lanced pattern



Cavity top view

Cut and separate material to produce lanced, inward curving aluminum lug projections at a minimum lateral spacing of 1.6mm (1/16 in).

Space lanced indentations 19mm (3/4 in) apart at the centerline. The lanced pattern will be configured in a staggered formation running parallel along both lugs. The vertical aluminum displacement of the lanced workpiece should be at a minimum depth of 4.76mm (3/16 in).

Dimensions are based on typical profiles. Engineering requirements may vary according to extrusion configuration. Consult Azon for tooling recommendations.



Azon

2204 Ravine Road
Kalamazoo, MI 49004-3516

Tel: 269-385-5942 • Fax: 269-385-5937 | E-mail: azotec@azonusa.com • Web: www.azonintl.com

AZO/Tec[®]

© Azon LNSPEC 031213